

TRADITIONAL CZECH GLASS

# Chandelier *Plates* and *Centrepieces*



PRECIOSA



TRADITIONAL CZECH GLASS

# Chandelier Centrepieces



**Putsch 657** 5226/203



**Putsch 660** 5269/210



**Putsch 670** 5270/230



**Putsch 676** 5241/215

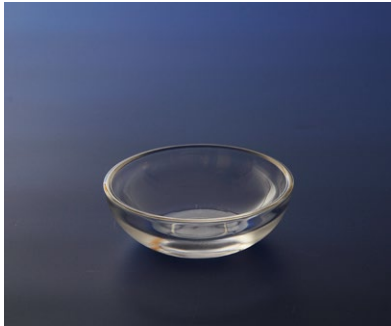


**Putsch 679** 5290/195

TRADITIONAL CZECH GLASS

# Chandelier Plates

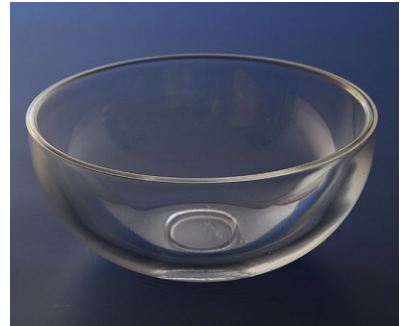
## Glass semi-product



**MF 695** ø 85 x 30 x 4 mm



**MF 694** ø 110 x 46 x 4 mm



**MF 667** ø 130 x 60 x 4 mm



**MF 3517** ø 102 x 31 x 4 mm



**MF 655** ø 103 x 31 x 4 mm



**MF 675** ø 100 x 33 x 4 mm



**MF 677** ø 100 x 33 x 4 mm



**MF 656** ø 130 x 57 x 4 mm



**MF 673** ø 130 x 60 x 4 mm

## **PRECIOSA Traditional Czech Glass**

A member of the Preciosa Group

Preciosa Group is a global leader in products manufactured from crystal. From the world famous Czech Beads and Crystal Components used in fashion industry, to tailor made Lighting projects for luxury hotels, royal palaces and yachts, the true craftsmanship of crystal production has been present in Bohemia since 16th century.

[Preciosa-Ornela.com](http://Preciosa-Ornela.com)